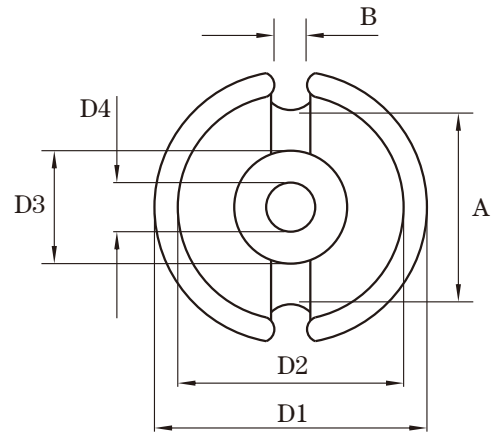
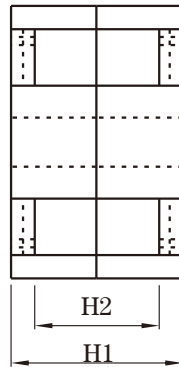


Dimension: (UNIT:mm)

D1	9.3-0.3
D2	7.5+0.25
D3	3.9-0.2
D4	2.1 ± 0.1
A	6.5 ± 0.25
B	2.0 ± 0.2
H1	5.4-0.3
H2	3.6+0.3

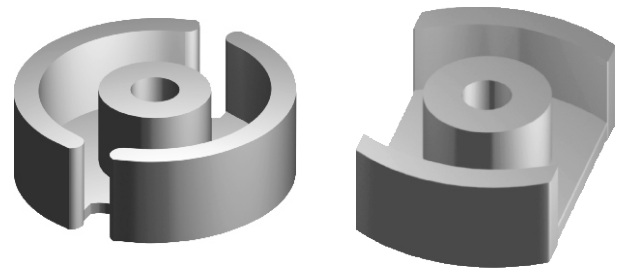


Test conditions

AL: F=1.0KHz U=0.3V N=10Ts

Effective parameter

C1(mm)	Ae(mm ²)	Le(mm)	Ve(mm ³)	Weight(g)
1.24	10.1	12.5	126	≈0.8



Core sets for general purpose transformers and power applications.

Clamping force for Al measurements, 10+/-5N.

Grade	AL (nH)	μe	AIR GAP μm	Type number
P5	1100 ± 25%	≈ 1080	≈ 0	P 0905-P5

Properties of core sets under power conditions

Grade	B (mT) at	Core loss (w) at			
	H=250 A/m F=25KHz T=100°C	F=25 KHz B=200mT T=100°C	f=100 KHz B=100mT T=100°C	F=100 KHz B=200 mT T=100°C	F=400 KHz B=50mT T=100°C
P3	≥315	-	≤0.015	-	≤0.03

Core sets of high permeability grades.

Clamping force for Al measurements, 25+/-5N

Grade	AL (nH)	μe	AIR GAP μm	Type number
H7K	2300 ± 25%	≈ 2020	≈ 0	P 0905-H7K

Note:

- 1: Document is the property of FUAN Inc & is not allow to be duplicated without authorization
- 2: RoHS compliant.