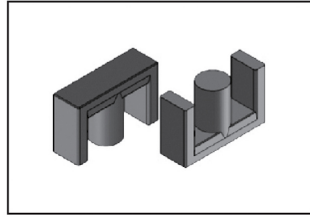


EER/ETD CORE

TYPE	FIG.	Dimensions(mm)					
		A	B	C	D	E	F
EER25/18/11	1	25.0±0.3	9.3±0.3	10.75±0.3	9.35±0.3	18.6min	5.8±0.2
EER28/19/11	1	28.5±0.6	9.7±0.2	11.2±0.3	9.7±0.3	21.3min	5.2±0.3
EER28/20/11	1	28.5±0.6	10.0±0.15	11.2±0.3	9.7±0.3	21.3min	6.5±0.2
EER28/28/11	1	28.5±0.6	14.0±0.3	11.2±0.3	9.7±0.3	21.3min	9.7±0.3
EER28/29/11	1	30.5±0.5	14.6±0.5	11.4±0.25	9.9±0.25	23.5min	10.3±0.3
EER28/34/11	1	28.5±0.5	17.0±0.4	11.2±0.3	9.7±0.3	21.3min	12.5±0.2
EER29/28/11	1	29.8±0.6	14.0±0.4	11.2±0.3	9.7±0.3	22.0min	9.85±0.3
ETD29/32/10	2	29.8±0.6	15.8±0.3	9.5±0.3	9.5±0.3	22.0min	11.2±0.3
EER29/34/11	1	29.8±0.6	17.0±0.3	11.2±0.3	9.7±0.3	22.0min	12.5±0.3
EER30/16/20	1	30.0±0.5	8.0±0.2	20.0±0.3	11±0.2	26.0±0.4	5.3±0.2
EER30/19/20	1	30.0±0.5	9.4±0.25	20.3±0.3	13.2±0.25	25.3min	6.6±0.2
EER31/20/20	1	31.7±0.5	10.2±0.4	20.3±0.3	13.3±0.5	26.5min	7.5±0.3
EER31/24/20	1	31.5±0.5	12.2±0.2	20.3±0.3	13.3±0.3	26.9±0.4	9.1±0.2
EER33/34/14	1	33.0±0.6	17.3±0.3	14.0±0.25	12.5±0.25	24.7min	12.8±0.25
ETD34/34/11	2	34.2±0.8	17.3±0.2	10.8±0.3	10.8±0.3	25.1min	12.1±0.3
EER35/34/11	1	35.2±0.8	17.3±0.2	10.8±0.3	10.8±0.3	26.6min	12.1±0.3
EER35/30/11	1	35.3±0.7	15.2±0.3	11.2±0.3	11.1±0.3	26.0min	10.1±0.3
EER35/42/11	1	35.30±0.7	21.2±0.3	11.3±0.25	11.2±0.3	25.6min	15.2±0.3
EER35/43/11	1	35.3±0.5	21.5±0.3	11.3±0.3	11.2±0.3	26.0min	15.5±0.3
EER36/13/20	1	36.0±0.6	6.35±0.2	20.3±0.3	13.3±0.3	31.0±0.6	3.45±0.2
EER36/18/20	1	36.0±0.6	9.55±0.2	20.3±0.3	13.3±0.3	31.0±0.6	6.9±0.2
EER36/43/11	1	36.2±0.5	21.6±0.4	11.3±0.3	11.3±0.3	27.5min	15.6±0.3
ETD39/40/13	2	39.1±0.9	20.2±0.4	12.5±0.3	12.5±0.3	30.1±0.8	14.8±0.4
ETD39/42/13	2	39.2±0.9	21.0±0.3	12.5±0.3	12.5±0.3	30.1±0.8	16.0±0.3
EER40/42/13	1	40.0±1.0	21.0±0.5	13.3±0.3	13.3±0.3	28.75min	14.5±0.4
EER40/43/15	1	40.0±1.0	21.5±0.3	15.0±0.3	14.0±0.3	30.2min	15.4±0.3
EER40/45/13	1	40.0±1.0	22.5±0.5	13.3±0.3	13.3±0.4	29.0min	15.9±0.4
EER40/48/13	1	40.0±1.0	24.0±0.5	13.3±0.3	13.3±0.4	28.0min	17.0±0.3
EER41/45/13	1	41.5±1.0	22.5±0.3	13.3±0.3	13.3±0.3	29.5min	15.8±0.3
EER42/33/20	1	42.0±1.0	16.5±0.3	19.6±0.4	17.25±0.3	32.3±0.8	10.5±0.3
EER42/45/15	1	42.0±0.7	22.5±0.3	15.3±0.3	15.3±0.3	30.8min	15.5±0.3
EER42/45/15.5	1	42.0±0.6	22.4±0.2	15.5±0.25	15.5±0.25	29.4min	15.4±0.3

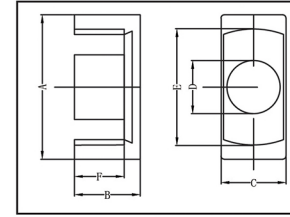
EER/ETD CORE

FIG.1

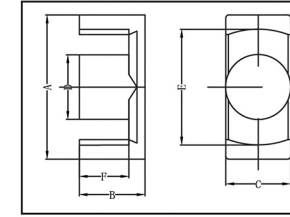


FIG.2

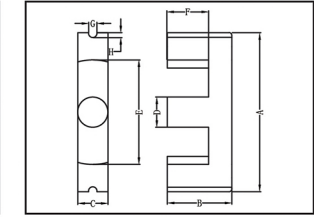
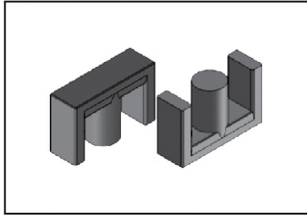
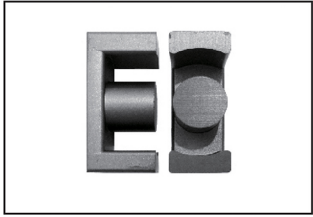


FIG.3

G	H	Cl (mm ³)	Ae (mm ²)	Le (mm)	Ve (mm ³)	AL±25%(nH/N ²)			Weight g/PRS
						FW40	FW44	FW95	
		0.60	68.60	46.40	3475.0	2600	2600	4450	18.5
		0.64	73.80	47.45	4421.0	2600	2600		24.2
		0.60	73.80	49.80	4008.0	2500	2500		24.0
		0.85	75.30	64.70	5837.0	2500	2500	4000	32.0
		0.90	76.90	69.65	6219.0	2800	2800		29.0
		1.03	73.80	76.15	6735.0	2400	2400	3600	35.0
		0.89	73.86	62.25	5946.0	2600	2300	3600	29.3
		1.00	70.84	71.55	5851.0	2600	2600		31.0
		1.04	73.86	76.85	7034.0	2100	2100		35.0
		0.554	94.98	52.70	5094.0	4300	4300		27.0
		0.426	136.77	58.30	6475.0	5600	5600		36.0
		0.454	138.85	63.15	7141.0	4400	4400		36.0
		0.503	138.85	69.95	8191.0	4660	4660		42.6
		0.669	122.65	82.15	10272.0	3400	3400	5100	52.0
		0.867	91.56	79.40	8304.0	2400	2400	3900	41.0
		0.878	91.56	80.40	8417.0	2800	2800		42.0
		0.743	96.71	71.95	8090.0	3100	3100		40.0
		0.918	100.23	92.05	11166.0	2700	2700	4050	53.0
		0.934	100.23	93.69	11151.0	2800	2800	3600	53.0
		0.37	138.35	51.45	5897.0	5600	5600		36.6
		0.469	138.35	65.25	7190.0	5000	5000		36.6
		0.953	100.23	95.55	11103.0	2500	2500		67.0
		0.772	122.65	94.75	12340.0	2600	2600		61.0
		0.818	122.65	100.35	12465.0	2800	2800		61.0
		0.672	138.85	93.40	15282.0	3600	3600		75.0
		0.714	138.85	99.25	16090.0	3500	3500	4800	76.5
		0.739	138.85	102.65	17595.0	3650	3650		78.0
		0.715	138.85	99.35	16827.0	4200	4200		83.0
		0.355	233.58	82.92	18776.0	6800	6800		93.0
		0.546	138.76	100.45	20005.0	4000	4000	6400	102.0
		0.523	188.59	98.75	20938.0	5000	5000		102.0

EER/ETD CORE

TYPE	FIG.	Dimensions(mm)					
		A	B	C	D	E	F
EER42/42/20	1	42.0±1.0	21.6±0.3	19.6±0.4	17.25±0.3	32.8±0.5	15.65±0.25
EER43/47/15	1	43.3±0.6	23.8±0.3	15.0±0.30	15.0±0.30	32.0min	16.8±0.3
ETD44/45/15	2	44.0±1.0	22.3±0.2	14.8±0.4	14.8±0.4	33.3±0.8	16.5±0.4
ETD49/50/16	2	49.0±1.0	25.0±0.3	16.3±0.4	16.3±0.4	36.4min	18.3±0.4
EER49/54/17	1	49.0±1.0	27.2±0.3	17.0±0.2	17.0±0.2	36.4min	18.8±0.4
EER53/46/22	1	53.20±0.8	23.20±0.3	21.50±0.3	20.0±0.3	38.7min	16.30±0.3
EER54/55/19	1	54.2±1.0	27.50±0.3	18.90±0.4	18.9±0.4	40.5min	20.2±0.3
ETD59/62/22	2	59.8±1.3	31.0±0.5	21.65±0.4	21.65±0.4	43.6min	22.4±0.5
EER70/69/16	3	70.0±1.5	34.5±0.3	16.4±0.4	16.4±0.4	43.3min	22.75±0.3
EER90/90/30	3	90.0±2.0	45.0±0.3	30.0±0.5	30.0±0.5	68.5min	35.5±0.5
EER110/70/30	3	110.0±2.0	35.0±0.3	30.0±0.5	30.0±0.5	90.0min	25.0±0.3
EER110/90/30	3	110.0±2.0	45.0±0.3	30.0±0.5	30.0±0.5	90.0min	35.0±0.3
EER112/100/31	3	112.0±2.0	50.0±0.3	31.0±0.5	31.0±0.5	93.0min	39.0±0.3
EER112/104/31	3	112.0±2.0	52.0±0.3	31.0±0.5	31.0±0.5	93.0min	42.0±0.3
EER120/101/30	3	120.0±2.5	50.5±1.0	30.0±1.0	31.0±1.0	93.3min	35.5±1.0

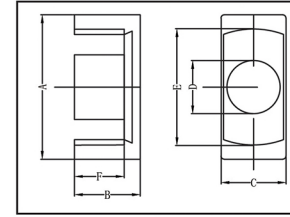
EER/ETD CORE

FIG.1

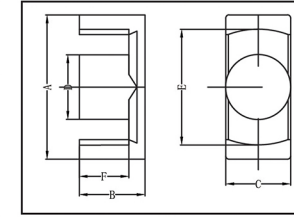


FIG.2

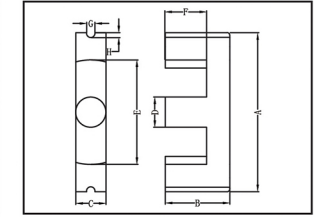


FIG.3

G	H	C1 (mm ²)	Ae (mm ²)	Le (mm)	Ve (mm ³)	AL ± 25% (nH/N ²)			Weight g/PRS
						FW40	FW44	FW95	
		0.445	233.58	104.00	21757.0	5500	5500		121.60
		0.61	176.00	107.20	20256.0	4000	4000		106.00
		0.62	171.94	106.70	18454.0	3500	3500		91.00
		0.55	211.00	115.90	24416.0	4200			124.00
		0.529	226.85	120.10	30578.0	4500	5300		148.00
		0.363	314.00	114.10	36043.0	6400	6400		190.00
		0.48	271.20	130.58	35414.5	4400			178.00
		0.391	367.94	144.00	54465.0	6500			265.00
4.75±0.3	5.2±0.2	0.68	211.00	143.00	55612.0	3694			267.00
6.0±0.3	6.5±0.2	0.319	706.00	225.00	147265.0	7876			705.00
5.55±0.2	5.18±0.2	0.29	706.50	205.00	131325.0	8664			630.00
5.55±0.2	5.18±0.2	0.345	706.00	245.00	157455.0	7500			756.00
6.0±0.2		0.356	754.00	276.50	182284.0	7064			850.00
6.2±0.2		0.363	754.00	276.00	182284.0	7000			875.00
5.85±0.2	6.0±0.2	0.354	706.00	250.00	215032.0	7250			1032.00