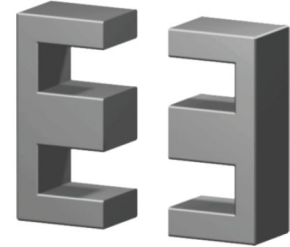
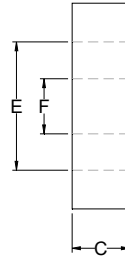
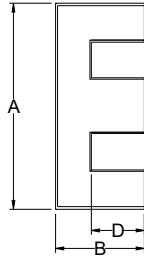


Dimension: (UNIT:mm)

A	16.00 ± 0.40
B	7.30 ± 0.20
C	4.80 ± 0.25
D	5.30 ± 0.20
E	11.70 Min
F	4.00 ± 0.20



Effective parameter

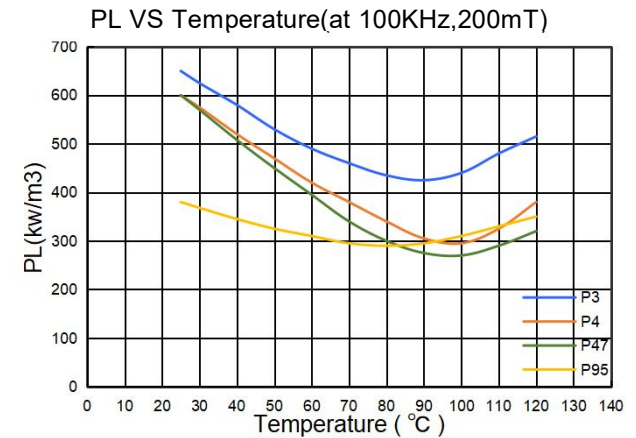
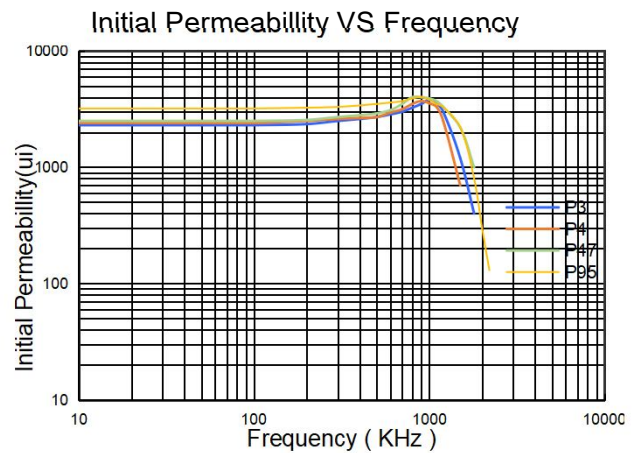
C1(mm ⁻¹)	Le(mm)	Ae(mm ²)	Ve(mm ³)	Wt(g/set)
1.830	35.42	19.36	685.7	3.6

Core sets for general purpose transformers and Power applications.
Clamping force for AI measurements,80+/-20N.

Test conditions

AL: F=1.0KHz U=0.25V N=10Ts (HP-4284A).

Grade	AL (nH)	Air Gap um	Type number
P3	63 ± 3%	≈ 498	EE16 -P3
	100 ± 3%	≈ 294	EE16 -P3
	160 ± 5%	≈ 174	EE16 -P3
	315 ± 8%	≈ 84	EE16 -P3
	1100 ± 25%	≈ 0	EE16 -P3
P4	1150 ± 25%	≈ 0	EE16 -P4
P47	1150 ± 25%	≈ 0	EE16 -P47
P95	1450 ± 25%	≈ 0	EE16 -P95



Properties of core sets under power conditions

Grade	ui	Bs(mT)		Max core loss (W) at 100KHz,200mT		
		25°C	100°C	25°C	60°C	100°C
P3	2300	510	390	0.72	0.50	0.45
P4	2400	510	390	0.66	0.46	0.33
P47	2400	530	420	0.66	0.44	0.30
P95	3200	510	390	0.42	0.31	0.35

Note:

- 1:Document is the property of FUAN Inc & is not allowed to be duplicated without authorizatio
- 2:ROHS compliant.